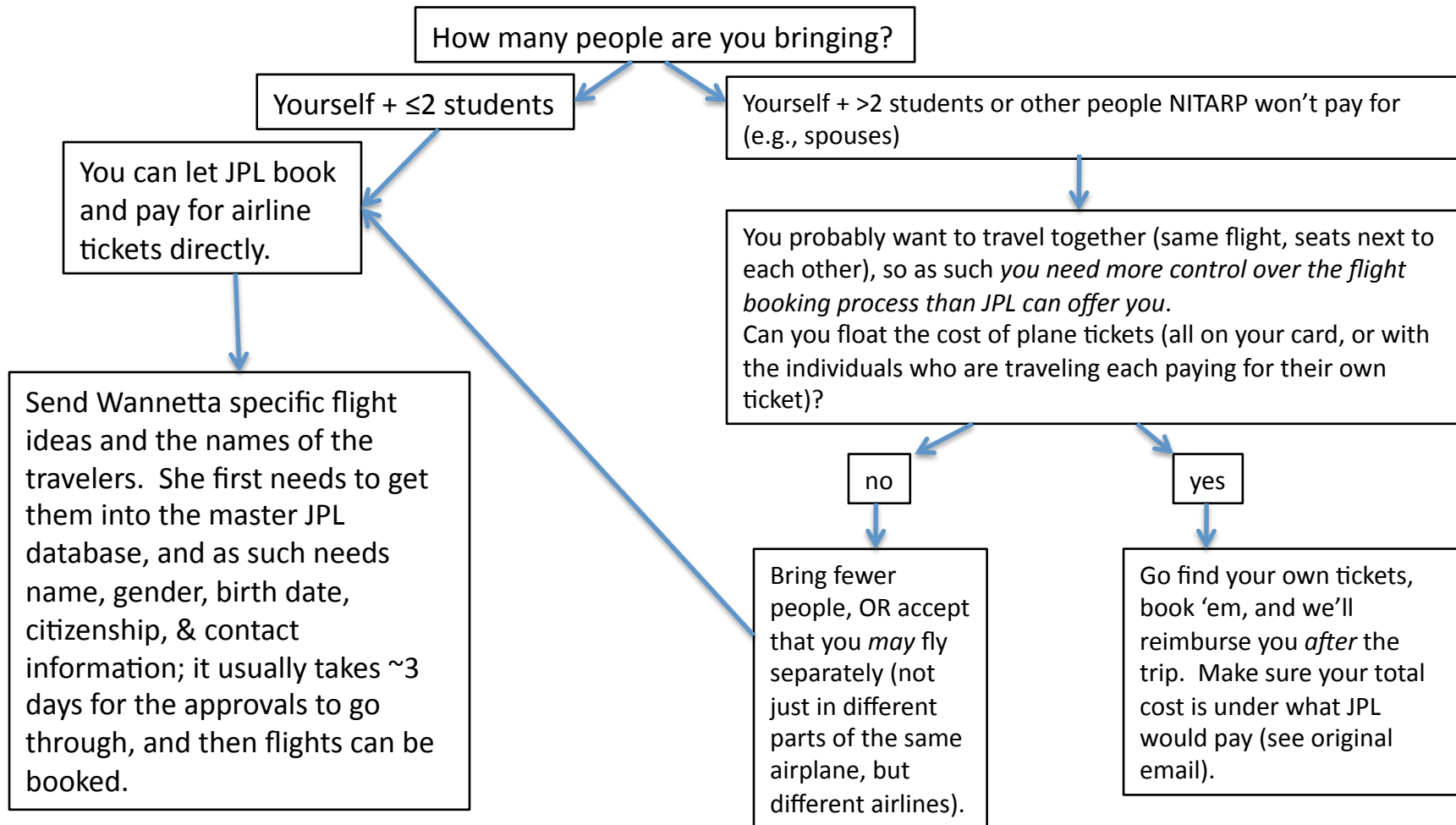
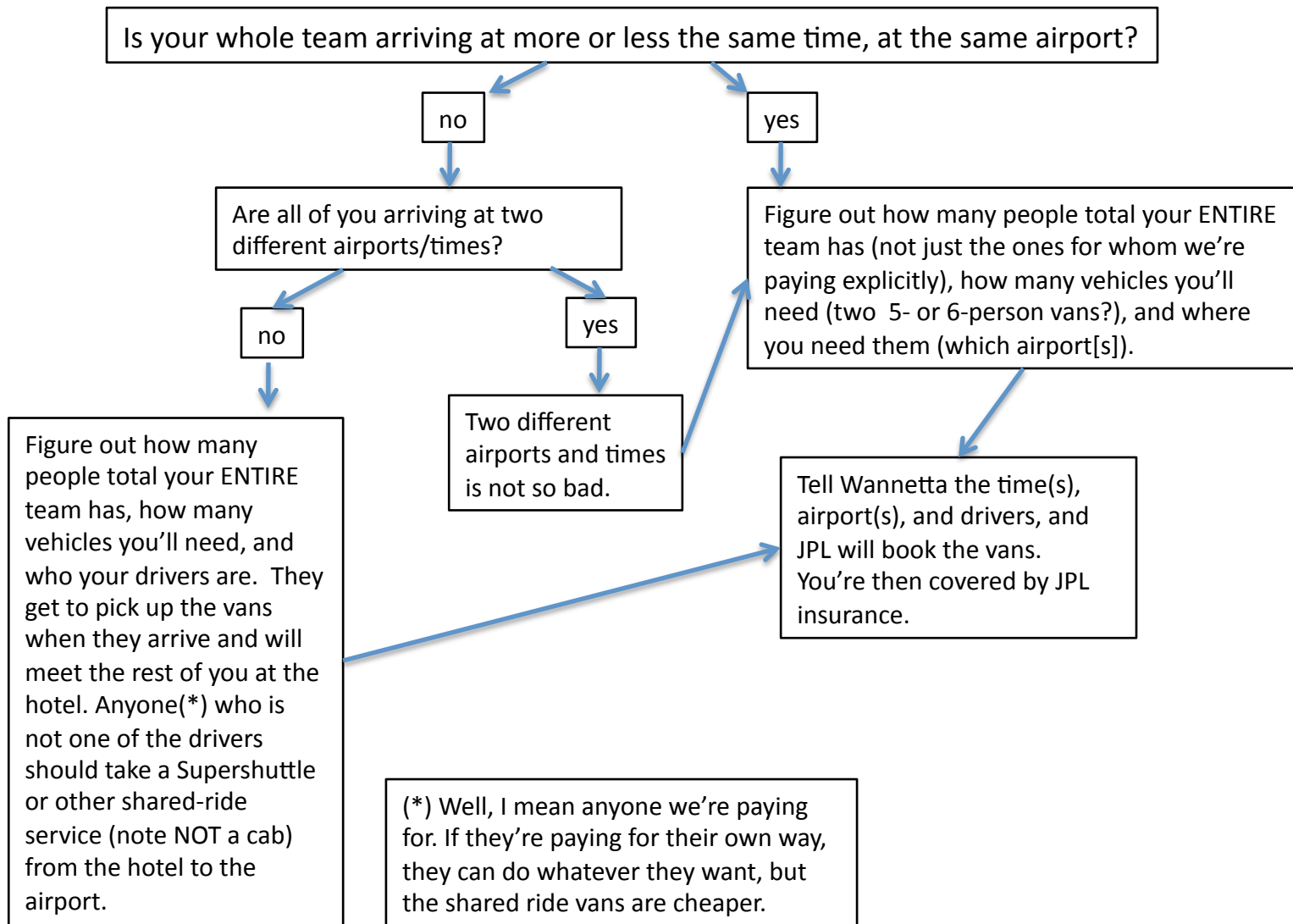


AIRFARE ISSUES... it boils down to control over your flights.



TRANSPORTATION ISSUES... we don't have enough money for everyone to have their own car.



HOTEL ISSUES... Your team should decide how many rooms they need and where to stay. You should all stay at the same hotel (because it just makes it so much easier). Your team should make their own reservations. Your credit card should NOT be charged until after you stay – no need to go SO cheap (e.g., Priceline) that you have to pay for rooms up front. We're not THAT broke. You do need to stay under the government allowance for hotels (see original email). Teachers can stay in their own rooms if they want; students should definitely double-up if possible.

FORM ISSUES... We can only pay for you plus up to 2 students. BUT we still need medical release and media release forms from ALL of the students who are coming. Everyone needs to fill out the forms on the website, and fax them or mail them to Luisa (or Varoujan).

REIMBURSEMENT ISSUES... The faster you send in receipts, the faster you get your money back.

